



**PERFECTION**  
Industrial Sales

# LIVE WEBCAST AUCTION

**Manchester**  
Metals, LLC

## – DUCTILE & GRAY IRON FOUNDRY FACILITY CLOSURE

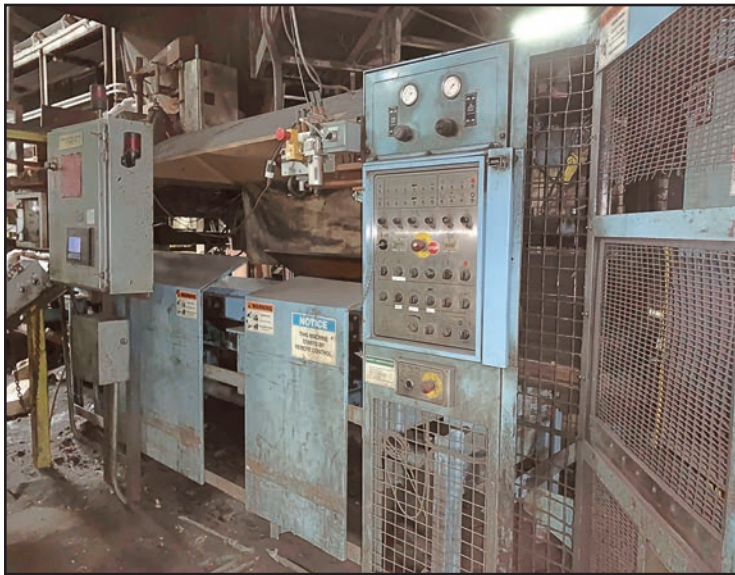


**3,000 KW**



**2013**

AJAX INDUCTION FURNACE SYSTEM



DISA 2110 MK2 MOLDING LINE



LAEMPEL-20 COLD BOX CORE CELL

**FEATURING: INDUCTION FURNACE SYSTEMS, MOLDING, SHELL CORE MACHINES, MIXER & CORE STATION, CORE CELLS, GRINDERS, CONVEYORS, PATTERN & MACHINE SHOPS, METROLOGY LAB, ROLLING STOCK, CRANES, MAINTENANCE CRIBS & MUCH MORE**

Webcast Bidding  
Available Through

**BidSpotter.com**

**Sale Date:** Tuesday, May 14 at 9:00 AM ET  
**Sale Location:** 205 Wabash Road, North Manchester, Indiana 46962  
**Inspection:** Monday, May 13 from 8:00 AM to 4:00 PM ET or by Appointment



**PERFECTION**  
Industrial Sales

Perfection Industrial Sales  
ph +1-847-545-6374 • fax +1-847-427-8884  
www.perfectionindustrial.com

Sale is Being Held in Conjunction With:



www.pplauction.com • ph 224-927-5320



**World Equipment & Machine Sales Co.**

www.foundry-eqpt.com • ph 440-519-1745



# INDUCTION FURNACE SYSTEMS, MOLDING LINE, MOLDING MACHINES



**3,000 KW**

AJAX INDUCTION FURNACE SYSTEM



**2013**

## INDUCTION FURNACE SYSTEMS

2013 AJAX 3,000 KW INDUCTION FURNACE SYSTEM, (2) 7.5-Ton Shell Furnaces, Water System

INDUCTOTHERM 1,750 KW INDUCTION FURNACE SYSTEM, s/n 94H-32616-247-11, (1) 7.5-Ton Steel Shell Furnace, Water System

## MOLDING LINE

DISA 2110 MK2 MOLDING LINE, s/n 94.2671, 60'L AMC, SBC, Cyclone



DISA 2110 MK2 MOLDING LINE



**1,750 KW**

INDUCTOTHERM INDUCTION FURNACE SYSTEM



OSBORN 3191 ROTALIFT MOLDING MACHINE



OSBORN 3161 ROTALIFT MOLDING MACHINE



**2 AVAILABLE**

OSBORN 722-RA MOLDING MACHINES

## MOLDING MACHINES

OSBORN 3191 ROTALIFT MOLDING MACHINE, s/n 15715-A, w/ Pattern Handler

OSBORN 3161 ROTALIFT MOLDING MACHINE, s/n 17339-G, w/ Pattern Handler

(2) OSBORN 722-RA MOLDING MACHINES, s/n's 17437-D, 16448-F, Pin Lifts, Control

Webcast Bidding Available Through [BidSpotter.com](http://BidSpotter.com)

To discuss your requirements for an auction, please call Perfection Industrial +1-847-545-6374



# SHELL CORE MACHINES, MIXER & CORE STATION, CORE CELLS

## SHELL CORE MACHINES

BEARDSLEY & PIPER SF-104-A SHELL CORE MACHINE, s/n CSC-104A-741206

(2) BEARDSLEY & PIPER SF-6CA SHELL CORE MACHINE, s/n's CSC-6759-7302, CSC-6759-7303

## MIXER & CORE STATION

PALMER M-50 MIXER, s/n 177, 180 Degree Swivel, Extended Reach, w/Palmer 8-Station Core Table

DEPENDABLE ELECTRIC SAND HEATER



BEARDSLEY & PIPER SF-104-A SHELL CORE MACHINE



PALMER M-50 MIXER W/8-STATION CORE TABLE



LAEMPE L-20 COLD BOX CORE CELL



LAEMPE LKFZ-20 COLD BOX CORE CELL



LAEMPE L-10 COLD BOX CORE CELL

## CORE CELLS

LAEMPE L-20 COLD BOX CORE CELL, Pump, Sand Transporter

LAEMPE LKFZ-20 COLD BOX CORE CELL, s/n 827, Mixer, Pump

LAEMPE L-10 COLD BOX CORE CELL W/MIXER

LAEMPE LKFZ-10 COLD BOX CORE CELL, s/n 861, Mixer, Pump

(2) SHALCO U-180 SHELL BLOWERS, Dual Gas, Gun Drilled, w/PLC

INTEREL CORPORATION MS-2500 SCRUBBER, s/n 932

(2) INTEREL CORPORATION MS-1200 SCRUBBERS, s/n's 802, 1039

**Sale Location:** 205 Wabash Road  
North Manchester, Indiana 46962



**2 AVAILABLE**

INTEREL MS-1200 SCRUBBER



**2 AVAILABLE**

SHALCO U-180 SHELL BLOWERS



INTEREL MS-2500 SCRUBBER

**Sale Date:** Tuesday, May 14  
at 9:00 AM ET

View our current auction schedule at [www.perfectionindustrial.com](http://www.perfectionindustrial.com)



# GRINDERS, FOUNDRY ROBOTS, VIBRATING & OSCILLATING CONVEYOR, SHOT BLAST, VACUUM SYSTEM

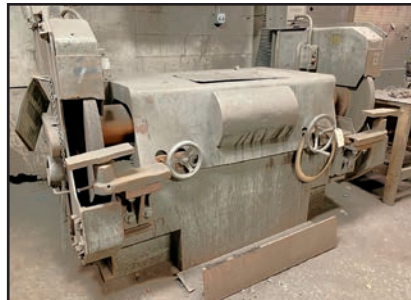
## GRINDERS

**SETCO SPL 923-525-8 SINGLE END GRINDER**, s/n 246391, 30"-18" Wheel Size, 1,210-2,016 Spindle RPM, 25 HP

**CINCINNATI SPL 926-520-8 SINGLE END GRINDER**, s/n 250002, 30" Wheel, 1,210-2,016 Spindle RPM, 15 HP

**CINCINNATI SPL 923-520-8 SINGLE END GRINDERS**, s/n 250001, 30" Wheel, 1,210-2,016 Spindle RPM, 20 HP

**CINCINNATI SPL 923-520-8 SINGLE END GRINDERS**, s/n 249644, 30" Wheel, 1,210-2,016 Spindle RPM, 20 HP



CINCINNATI DOUBLE END GRINDER



CARRIER 30" X 15' OSCILLATING CONVEYOR



CARRIER 36" X 13' VIBRATING CONVEYOR



**REBUILT BY SPINBLAST**

WHEELABRATOR TABLE SHOT BLAST SYSTEM

**CINCINNATI SPL 922-720-8 SINGLE END GRINDER**, s/n 249555, 30" Wheel, 1,590-2,655 Spindle RPM, 20 HP

**CINCINNATI SPL 926-520-8 SINGLE END GRINDER**, s/n 249645, 30" Wheel, 1,210-2,016 Spindle RPM, 20 HP

**CINCINNATI SPL 926-515-8 SINGLE END GRINDER**, s/n 250082, 30" Wheel Size, 1,210-2,016 Spindle RPM, 15 HP

**CINCINNATI SPL 926-515-8 SINGLE END GRINDER**, s/n NA, 15 HP

**CINCINNATI DOUBLE END GRINDER**, 30" Wheels, (2) 20 HP Motors

## FOUNDRY ROBOTS

(4) **ABB IRB6400 6-AXIS FOUNDRY ROBOTS** W/HAND HELD TEACH PENDANT CONTROLLER



**2 AVAILABLE**

CINCINNATI SPL 926-520-8 SINGLE END GRINDER



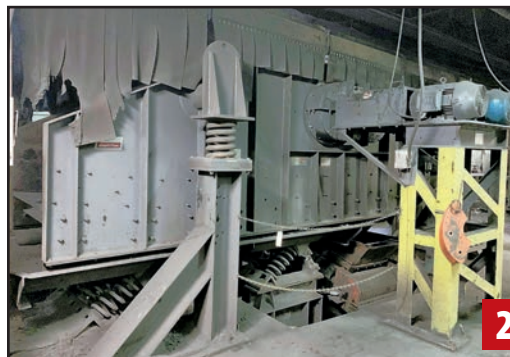
**2 AVAILABLE**

CINCINNATI SPL 923-520-8 SINGLE END GRINDER



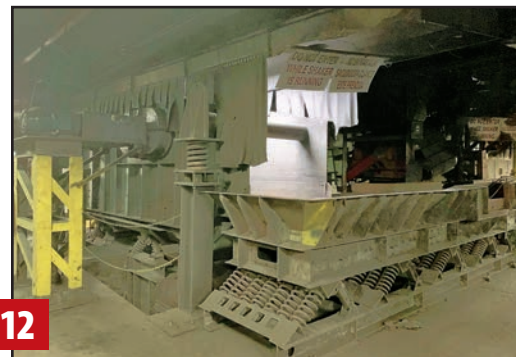
**4 AVAILABLE**

ABB IRB6400 ROBOTS



**2012**

CARRIER SMSO-542405 54" X 18' SHAKEOUT



## VIBRATING & OSCILLATING CONVEYOR

**2012 CARRIER SMSO-542405 SHAKEOUT**, s/n 27825, 54" x 18'L, (2) 15 HP Motors

**CARRIER OSCILLATING CONVEYOR**, s/n 111-3060-P, 30" x 15'L

**CARRIER OSCILLATING CONVEYOR**, s/n NA, 36" x 40'L

**2014 CARRIER XHHI36120S OSCILLATING CONVEYOR**, s/n 28406, 36" x 25'L

**CARRIER VIBRATING CONVEYOR**, s/n 22465, 36" x 13'L, 75 TPH, 5 HP

**GK MOLD DOUBLE DECK DUMP CONVEYOR**, 48" x 18'L

**GK MOLD INCLINED DUMP CONVEYOR**, 36" x 30'L

**GK MOLD DUMP CONVEYOR**, 36" x 100'L

## SHOT BLAST

**WHEELABRATOR TABLE SHOT BLAST SYSTEM**, s/n A94232, 66" Swing Table, 20 HP, Pitless, (Rebuilt by Spinblast)

## VACUUM SYSTEM

**HI-VAC CORP 320CF INDUSTRIAL VACUUM SYSTEM**, s/n HV-5285



HI-VAC CORP 320CF INDUSTRIAL VACUUM SYSTEM



# WATER COOLING SYSTEM, PATTERN SHOP & MACHINE SHOP



ADVANTAGE TTK-3000-3P WATER COOLING SYSTEM

2013

## WATER COOLING SYSTEM

2013 ADVANTAGE TTK-3000-3P WATER COOLING SYSTEM, s/n 131518, (2) Reservoirs, Checkmate LE Series Control

## PATTERN SHOP & MACHINE SHOP

(3) TABOR 16" CUT-OFF SAWS, Split Adjustable Table, 7.5 and 15 HP

BEAVER MACHINE VBRP VERTICAL MILL, s/n 5636/2, 10" x 48" Table, Anilam Wizard DRO

BRIDGEPORT VERTICAL MILL, 9" x 42" Table, 80-2,720 RPM Mitutoyo DRO

WELLS 8-M HORIZONTAL BANDSAW, s/n 10820

GROB 4V-24 VERTICAL BANDSAW, s/n 784, 25" Throat, 28" x 24" Table

ROCKWELL DELTA 28-290 VERTICAL BANDSAW, s/n DN8856, 14" x 14" Table, 13.5" Throat

DAYTON 4TJ91 14" VERTICAL BANDSAW, s/n 200512, 14" x 14" Table

DAYTON 1FYX1A 14" VERTICAL BANDSAW, s/n 201108, 13-3/4" x 14" Table, 3/4 HP

HAMMOND 100-D-B ABRASIVE BELT GRINDER, 3400 SFPM, 10" Belt, 21" x 24" Table



3 AVAILABLE

TABOR 16" CUT-OFF SAWS

DAYTON 49G990A 6" X 9" BELT AND DISC GRINDER, s/n 01170081, 1 HP

DAYTON 2LKR8 7" BENCH GRINDER, s/n 13121773, 1/2 HP, 3,450 RPM

DEWALT DW733 12-1/2" THICKNESS PLANER, s/n 200147-CT1750

BOICE CRANE MONO MASTER 33500 10" TABLE SAW, s/n 608

DELTA 31-120 12" DISC SANDER, s/n 30802420011  
12" DISC SANDER W/RELIANCE 1 HP MOTOR

JET DC-1200 DUST COLLECTOR, s/n 5079586, 2 HP

DELTA ROCKWELL 20" DRILL PRESS, s/n 11D 00268, 18" x 20" Table, 10" Throat

DELTA DP220 BENCH TOP DRILL PRESS, 7" Throat, 10" x 10" Table

ROOVERS T10A TAPEWRITER METAL TAPE EMBOS-  
SING MACHINE, s/n H106241

M. S TYLER RO-TAP RX-29 SIEVE SHAKER, s/n 11481

MIDWESTERN INDUSTRIES ME24C4-4-1 2-LEVEL VI-  
BRATING SCREEN, s/n 0214-2008, 3/4 HP

ANCHOR CEMENT MIXING SYSTEM



DELTA 31-120 12" DISC SANDER



BOICE CRANE MONO MASTER  
TABLE SAW



MIDWESTERN INDUSTRIES  
ME24C4-4-1 VIBRATING SCREEN



BEAVER MACHINE VBRP  
VERTICAL MILL



BRIDGEPORT  
VERTICAL MILL



DAYTON 14"  
VERTICAL  
BANDSAW



HAMMOND 100-D-8  
ABRASIVE BELT  
GRINDER



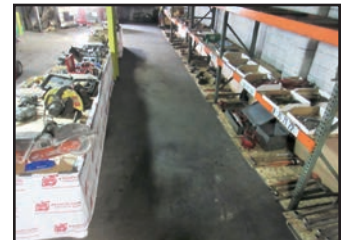
DEWALT DW733  
12-1/2" THICKNESS  
PLANER



ANCHOR CEMENT MIXING SYSTEM



(OVER 100+) STEEL AND ALUMINUM FLASKS, ASSORTED SIZES



ASSORTED POWER AND HAND TOOLS

**ALSO AVAILABLE:** OVER (100+) STEEL AND ALUMINUM FLASKS OF ASSORTED SIZES, PNEUMATIC TOOLS, POWER TOOLS, ELECTRIC GRINDERS, SAW HORSES, C-CLAMPS, HAND TOOLS, FLAMMABLE LIQUIDS CABINETS, AND MORE

View our current auction schedule at [www.perfectionindustrial.com](http://www.perfectionindustrial.com)



# WELDING, METROLOGY LAB & TEST EQUIPMENT, MAINTENANCE CRIBS

## WELDING

**MILLER TRAILBLAZER 325 WELDER/GENERATOR,** s/n MD351340R

**MILLER SHOPMASTER 300 AC/DC ARC WELDING POWER SOURCE,** s/n KD387461

**MILLER SRH-333 WELDING POWER SOURCE,** s/n HE813869



**DETROIT PH-2  
HARDNESS TESTER**

**WELDING  
POWER SOURCES**



**LECO GDS500A SPECTROMETER**



**HAERAUUS DATACAST ENTOUCH  
THERMAL ANALYSIS SYSTEM**



**LAB SCALE AND  
MOISTURE ANALYZER**



**DIETERT 536-C  
ULTRASONIC SCRUBBER**



**2014  
GREEN SAND CONTROLS PME-ACTS  
PRECISION TEST STATION**



**BARNSTEAD  
THERMOLYNE FZB1315M  
MUFFLER FURNACE**



**DIETERT/  
GEORGE FISCHER  
276-B-MD2  
MOISTURE GAGE**



**2013  
SIMPSON 42105-ASM  
DIGITAL ABSOLUTE PERMMETER**



**BUEHLER METASERV 250 POLISHER**



**NIKON ECLIPSE MA100 MICROSCOPE**

## METROLOGY LAB & TEST EQUIPMENT

**(3) HERAEUS DATACAST ENTOUCH  
THERMAL ANALYSIS SYSTEM**

**DETROIT PH-2 HARDNESS TESTER,**  
s/n 754

**DETROIT DH-1 HARDNESS TESTER,**  
s/n 1124

**KING PORTABLE BRINELL TESTER,**  
s/n NA

**2014 GREEN SAND CONTROLS PME-  
ACTS PRECISION TEST STATION,**  
s/n ACTS-235

**LECO GDS500A SPECTROMETER,**  
s/n 3312, PC

**BRAIN WEIGHT B1500D LAB SCALE,**  
s/n 12226

**OHAUS MB45 MOISTURE ANALYZER,**  
s/n B543597494

**2013 SIMPSON 42105- ASM DIGITAL  
ABSOLUTE PERMMETER, s/n 1213398**

**DIETERT 536-C ULTRASONIC  
SCRUBBER, s/n 42109B**

**BARNSTEAD THERMOLYNE FZB1315M  
MUFFLER FURNACE, s/n 1256070236678**

**DIETERT/GEORGE FISCHER FOUNDRY  
SYSTEMS 276-B-MD2 MOISTURE  
GAGE, s/n 40129**

**BUEHLER METASERV 250 GRINDER/  
POLISHER, s/n 705-MGT-00450**

**NIKON ECLIPSE MA100 MICROSCOPE,**  
s/n 432299

## MAINTENANCE CRIBS

**COMPLETE MAINTENANCE AREAS  
INCLUDING ELECTRICAL PANELS,  
SWITCHES, RELAYS, SOLENOIDS,  
MODULES, SAFETY SWITCHES,  
FUSES, BEARING PILLOW BLOCKS,  
SHEAVES, BUSHINGS, REGULATORS,  
ALLEN BRADLEY AND ATLAS COPCO  
ELECTRONICS AND MUCH MORE**



**LARGE  
MAINTENANCE  
CRIBS**



**Sale Date: Tuesday,  
May 14 at 9:00 AM ET**



# ROLLING STOCK, CRANES, AIR COMPRESSORS & DRYERS

## ROLLING STOCK

**6,000 LB TOYOTA 8FGU30 LP FORKLIFT**, s/n 14392, Triple Mast, 40" Fork Length, Side Shift

**5,000 LB TOYOTA 8FGU25 LP FORKLIFT**, s/n 12916, Double Mast, 40" Fork Length

**4,000 LB TOYOTA 7FGU25 LP FORKLIFT**, s/n 73483, Triple Mast, 40" Fork Length, Side Shift

**BOBCAT S150 SKID STEER LOADER**, s/n NA

**JLG E400AJPN TELESCOPIC BOOM LIFT**, s/n 0300091475

**NILFISK ADVANCE EXTERRA 6330 LP FLOOR SWEEPER**, s/n 1978501

**(2) STRICK 53' SEMI-TRAILERS**, VIN 1S12E9539-WD419803 and 1S12E8538WD429135



**6,000 LB**

TOYOTA 8FGU30 LP FORKLIFT



JLG E400AJPN TELESCOPIC BOOM LIFT



**2 AVAILABLE**

STRICK 53' SEMI-TRAILERS

## CRANES

**5-TON BREHOB YARD CRANE SYSTEM**, Electric Hoist, Remote Control, Approx 50' Span x 150' Runway

**1-TON CONTRX CRANES FREE STANDING JIB CRANE**, 9' Under Rail, 10' Reach, Coffing JLC Electric Hoist w/Pendant Control

**1/2-TON CONTRX CRANES FREE STANDING JIB CRANE**, 10' Under Rail, 10' Reach, Coffing JLC Electric Hoist w/Pendant Control

**1/4-TON CONTRX CRANES FREE STANDING JIB CRANE**, 8' Under Rail, 10' Reach, w/Endo ELF-40 Spring Balancer

**CONTRX CRANES JIB CRANE**, 7' Reach, w/ Coffing JLC Electric Hoist w/Pendant Control

**1/2-TON SNAP TRAC RAIL W/CM SHOPAIR PNEUMATIC HOIST W/PENDANT CONTROL**

**1/4-TON CONTRX CRANE JIB CRANE**, 8' Reach, w/CM ShopAir Pneumatic Hoist w/Pendant Control

**1-TON ABELL-HOWE JIB CRANE**, 7' Reach, w/CM AirStar Pneumatic Hoist w/Pendant Control

**1/4-TON CONTRX CRANES JIB CRANE**, w/CM ShopAir Pneumatic Hoist w/Pendant Control

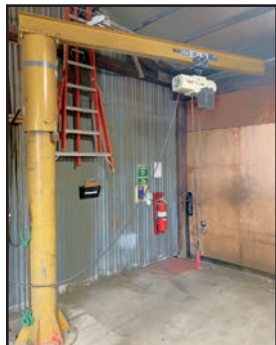
**WALKER LM57 MAGNET**



BOBCAT S150 SKID STEER LOADER



BREHOB 5-TON YARD CRANE SYSTEM



ASSORTED CONTRX JIB CRANES



WALKER LM57 MAGNET



**3 AVAILABLE**

SILO



ASSORTED MOTORS



HOPPERS

## AIR COMPRESSORS & DRYERS

**100 HP KAESER SFC 90S AIR COMPRESSOR**, s/n 1833, 125 PSIG

**75 HP GARDNER DENVER EBMOLE AIR COMPRESSOR**, s/n U86474, 100 PSIG

**50 HP GARDNER DENVER EBHOJC AIR COMPRESSOR**, s/n X01705, 125 PSIG

**INGERSOLL RAND D4080INA400 REFRIGERATED AIR DRYER**, s/n WCH1023052, 220 MAWP PSIG, R-404A Refrigerant

**KAESER KRD1000 COMPRESSED AIR DRYER**, R-404A Refrigerant, 200 PSIG, 1,000 SCFM

**GREAT LAKES GRD-400 REFRIGERATED AIR DRYER**, s/n 15964-2



**100 HP**

KAESER SFC 90S AIR COMPRESSOR



INGERSOLL RAND D4080INA400 REFRIGERATED AIR DRYER

View our current auction schedule at [www.perfectionindustrial.com](http://www.perfectionindustrial.com)



**Perfection Industrial Sales** – 2550 Arthur Ave., Elk Grove Village, IL 60007  
 ph +1-847-545-6374 • fax +1-847-427-8884 [www.perfectionindustrial.com](http://www.perfectionindustrial.com)  
 Perfection Industrial Sales, IN Auction License #AC31400046



Presorted  
 First Class Mail  
 U.S. Postage  
 PAID  
 Eugene, Oregon  
 Permit No. 17

**Featuring: Induction Furnace Systems, Molding, Shell Core Machines, Mixer & Core Station, Core Cells, Grinders, Conveyors, Pattern & Machine Shops, Metrology Lab, Rolling Stock, Cranes, Maintenance Cribs & Much More**

# LIVE WEBCAST AUCTION

**Sale Date:** Tuesday, May 14 at 9:00 AM ET

**Inspection:** Monday, May 13 from 8:00 AM to 4:00 PM ET or by Appointment

**Manchester Metals, LLC – DUCTILE & GRAY IRON  
 FOUNDRY FACILITY CLOSURE**



**2013 3,000 KW**

AJAX INDUCTION FURNACE SYSTEM

**Featuring: Induction Furnace Systems, Molding, Shell Core Machines, Mixer & Core Station, Core Cells, Grinders, Conveyors, Pattern & Machine Shops, Metrology Lab, Rolling Stock, Cranes, Maintenance Cribs & Much More**

# LIVE WEBCAST AUCTION

**TERMS OF SALE**

A 16% buyer's premium will be charged on all assets purchased by buyers attending the sale in person, and any Webcast or Online Buyers will be charged an 18% buyer's premium. Acceptable forms of payment are cashier's check, company check (with bank letter of guarantee) or wire transfer within 48 hours of the sale close. For any Buyers failing to pay within the 48-hour stated payment period, the buyer's premium will be increased to 18% (bidders attending the Auction in person) or 21% (Webcast or Online Bidders). Everything will be sold to the highest bidder, in accordance with the Auctioneer's customary "Terms of Sale", copies of which will be posted on the premises of the sale and subject to additional terms announced the day of sale. All items are sold "As is, Where is" without any warranty, express or implied.

**PAYMENT**

ALL PURCHASES MUST BE PAID WITHIN 48 HOURS OF THE CLOSE OF SALE. Contact our Accounting team for wire instructions. Only wire transfer or certified check, payable to Perfection Industrial Sales will be accepted. Company checks payable to Perfection Industrial Sales will be accepted only if accompanied by a bank letter of guarantee. All sales are subject to sales tax. Purchasers claiming Sales Tax exemptions must provide proof satisfactory to the Perfection Accounting team to claim such exemptions.

**REMOVAL**

All items must be removed no later than Friday, May 31. Removal hours are 8:00 AM to 4:00 PM Monday through Friday. Extended hours and weekends may be accommodated by prior appointment. Anyone removing purchased items with a lift truck or another powered vehicle must have a certificate of insurance with a \$2M General Liability policy, and that certificate must be provided to the auctioneer before removal.

**HOTELS**

- Hampton Inn Warsaw ..... (574) 268-2600
- 115 Robmar Drive, Warsaw, IN 46580
- Holiday Inn Express & Suites Ft. Wayne ..... (260) 459-1888
- 5915 Ellison Road, Ft. Wayne, IN 46804
- Hampton Inn Ft. Wayne-Southwest ..... (260) 459-1999
- 8219 W Jefferson Blvd., Ft. Wayne, IN 46804

**NEAREST AIRPORT**

Fort Wayne International Airport (35 miles from auction site)

**FOR FURTHER INFORMATION**

For further information, contact Jennifer Reiner at +1-847-545-6374 or [jennifer@perfectionindustrial.com](mailto:jennifer@perfectionindustrial.com)  
 Perfection Industrial Sales, IN Auction License #AC31400046

Webcast Bidding Available Through **BidSpotter.com**

**Sale Date:** Tuesday, May 14 at 9:00 AM ET  
**Sale Location:** 205 Wabash Road, North Manchester, Indiana 46962  
**Inspection:** Monday, May 13 from 8:00 AM to 4:00 PM ET or by Appointment



**Perfection Industrial Sales**  
 ph +1-847-545-6374 • fax +1-847-427-8884  
[www.perfectionindustrial.com](http://www.perfectionindustrial.com)

QS-0015184



Sale is Being Held in Conjunction With:  
[www.pplauction.com](http://www.pplauction.com) • ph 224-927-5320



**World Equipment & Machine Sales Co.**  
[www.foundry-eqpt.com](http://www.foundry-eqpt.com) • ph 440-519-1745